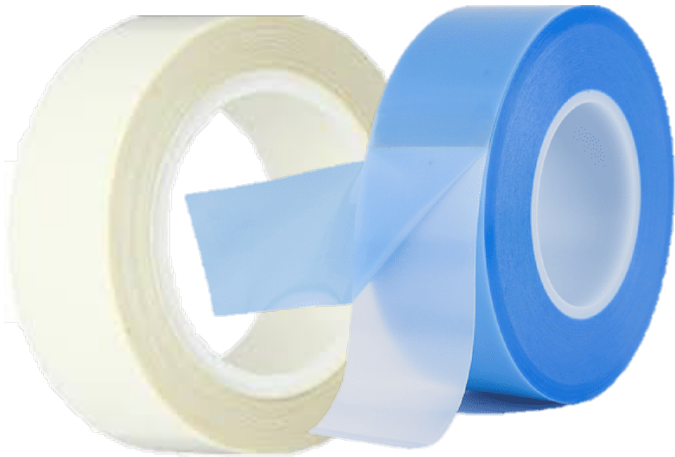


# Skived Natural UHMW-PE-Elastomeric Adhesive



#403 series natural UHMW-PE film coated with an aggressive high tack elastomeric adhesive.

The UHMW-PE substrate provide an excellent low friction, non-stick surface, that in many ways similar to PTFE. The UHMW-PE film has a very high tensile strength and is very tough film and excellent high wear resistant against gouging and abrasion.

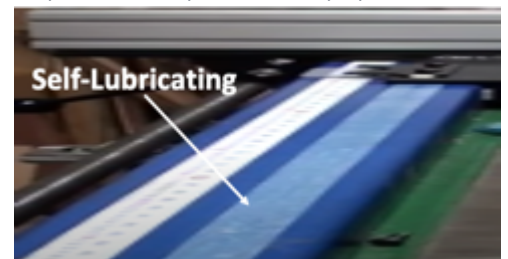
#403 series is available with standard film thickness of 0.0762mm, 0.127mm, 0.254mm, 0.381mm, 0,508mm

## Features:

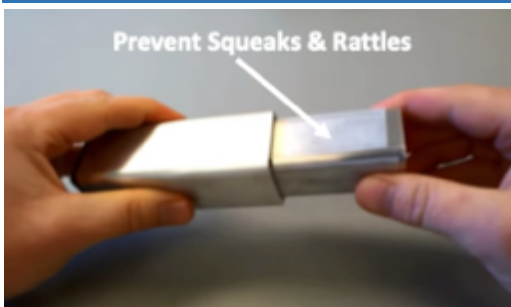
- Extreme abrasion resistance
- No water absorption
- Superior sound dampening
- Very low coefficient of friction
- Withstand gouging

## Benefits:

- Improved durability
- Quieter operation
- Lower cost than PTFE
- Prevent Squeaks & Rattles
- Higher wear resistant than high carbon by 10 X



TYPICAL TECHNICAL DATA (Nominal)						
Part Number	#403-3	#403-5	#403-10	#403-15	#403-20	Test Method
Colour	Natural					Visual
Backing Thickness (mm)	0.0762	0.127	0.254	0.381	0.508	-
Adhesive Thickness (mm)	0.0686	0.0686	0.0686	0.0686	0.0686	-
Total Thickness (mm)						-
Adhesion Strength (g/cm)	1004.49	1004.49	1004.49	1004.49	1004.49	ASTM D 1000
Tensile Strength (kg/cm)	3.214	5.357	10.715	16.07	21.4	ASTM D 3759
Elongation	300	300	300	300	300	-
Melting Temperature (°C)	135	135	135	135	135	-
Water Absorption (%)	0.01	0.01	0.01	0.01	0.01	-
Specification	21 CFR 177.1520					FDA
Operating Temperature (°C)	-40 to +95					
PRODUCT DIMENSION AVAILABILITY						
Maximum Width (mm)	635	6 to 660.4	6 to 660.4	6 to 660.4	6 to 660.4	-
Roll Length (metre)	16.5	16.5	16.5	16.5	16.5	-
Core Diameter (mm)	76.2	76.2	76.2	76.2	76.2	-
Competitive Products Reference	-	3M 5421 P630 2300-5R	3M 5423 P631 2300-10R	-	-	-



## Applications:

- Primary use in mechanical solutions
- Wear Pads
- Guide Rail
- Cabinets & Drawers Sliders
- Mahjong Tables
- Spray booth liners
- Metal Cans Manufacturing
- Cigarettes forming shoes
- Mouse foot
- Protecting aluminium sheets on stretch forming presses

## Release Liner:

- Release liner is either supplied in blue polyethylene or white Kraft, either liner use would not affect the performance of the tape